

Swiss Personalized Health Network

From clinical routine data to FAIR data for research

Dr. sc. ETH Sabine Österle

Lead Semantic Interoperability Strategy and FAIR Data Team,
Personalized Health Informatics Group, SIB Swiss Institute of Bioinformatics

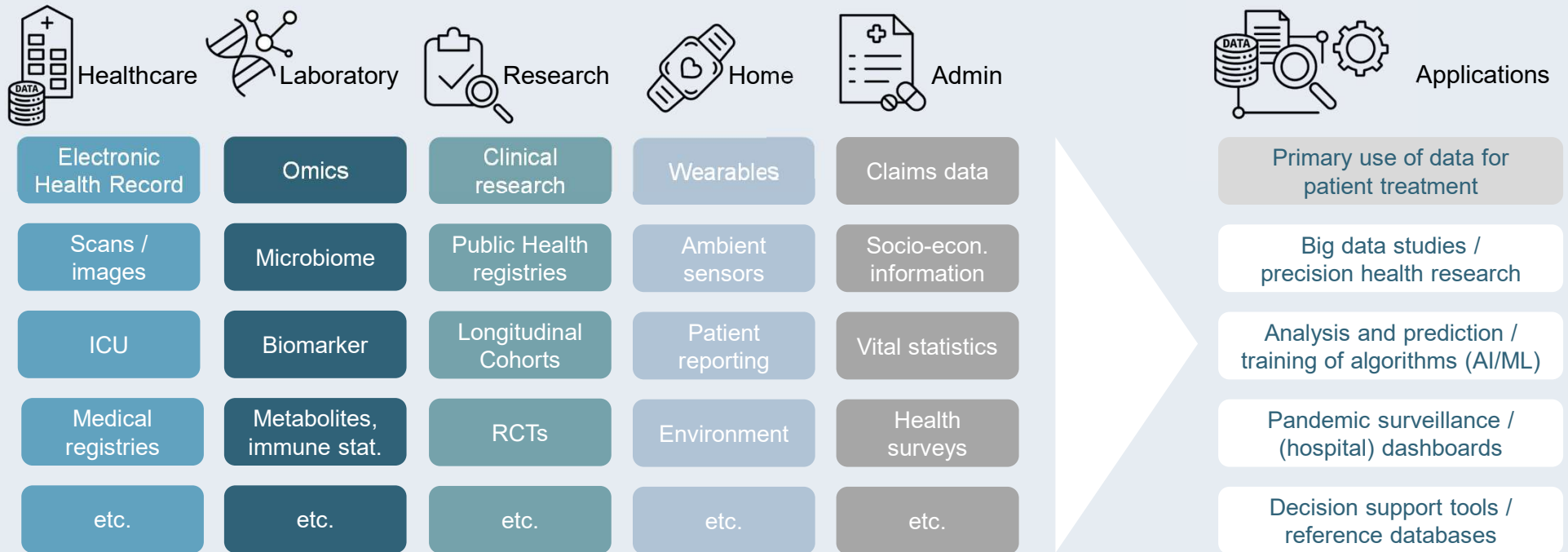
A project of



2024

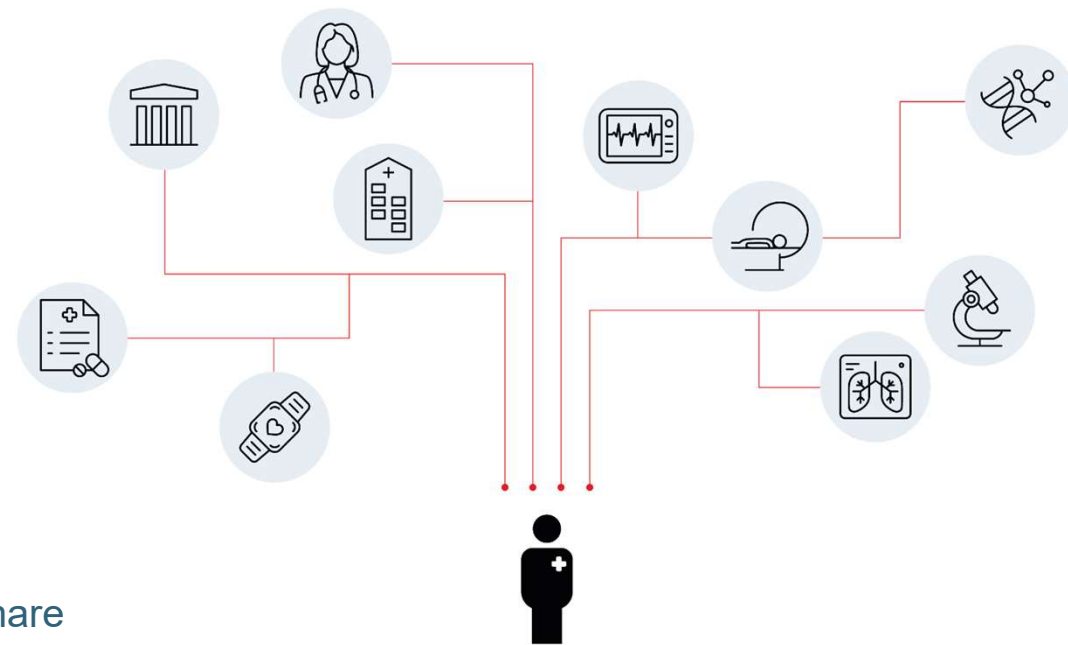


Health data and its areas of application

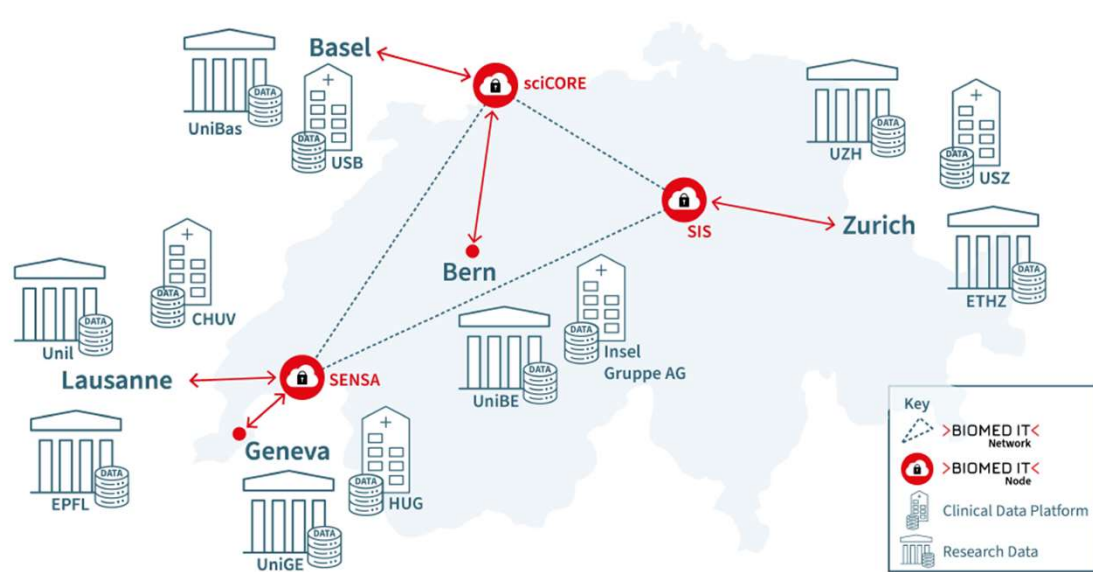


Personalized Health (Research): The Challenges

- RWD captured for care, reflect the billing reality rather than the patient reality
- Lots of free text, lack of structured data, local or no standards
- Data quality – sufficient for the purpose?
- Big Data analyses require a critical mass of data to be combined from various scattered sources
- (Gen)omic layer often missing
- Sensitive nature of health data (even if pseudo- or anonymized)
- Data ownership and governance: a nightmare
- Cultural shift



The Swiss Personalized Health Network



Personalized Health Informatics Group
 SIB
 SPHN Data Coordination Center (DCC) and BioMedIT Network

SPHN infrastructures, services and support



Clinical Data Platforms in Hospitals

Logos: INSELSPITAL, Universitätsspital Basel, USZ, Universitäts Spital Zürich, HUG, Hôpitaux Universitaires Genève

Production and Delivery of FAIR Data

SPHN Schema Forge: Data Concepts, Data Schema, Validation Rules, Statistical Queries, Documentations

SPHN Connector: Hospital Clinical Data, Ingestion, De-identification, Transformation, Validation, Data Files

Standards, SPHN Terminology Service

Health Data Discoverability and Reuse

Swiss cohort study data findability **mælstrom**

Federated data exploration and analytics **TUNE INSIGHT**

National Data Streams: SwissPed Health, SPO-NDS, LUCID, IICU

Federated Compute ARGOS, PERSONAL HEALTH TRAIN, SPHN Federated Query System

BioMedIT: + Trusted Research Environment

Data Providing Institutions: ETH Zurich, University of Basel, SIB Lausanne

Researchers

Data in, Results out

>BIOMEDIT< Portal

Related Services: Secure Project Spaces, Project Administration, Data Transfer, Tools and Services, Support

SPHN Interoperability Framework

Compositional concept approach, Ontology-agnostic representation

Research projects, Shared platforms, data-bases and repositories

Data catalogues and query systems

Legal Framework & Data Governance

Agreement templates for multi-center projects

ELSI Helpdesk and support

Data Governance Working Group

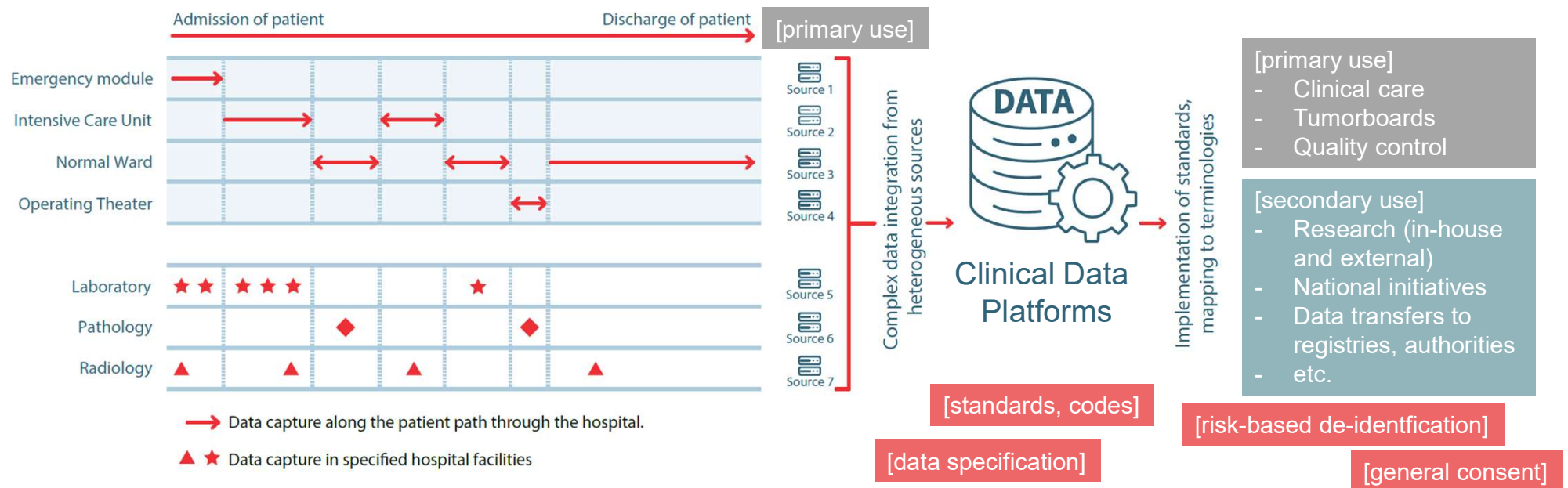
SPHN Ethical Framework

Outreach and Training

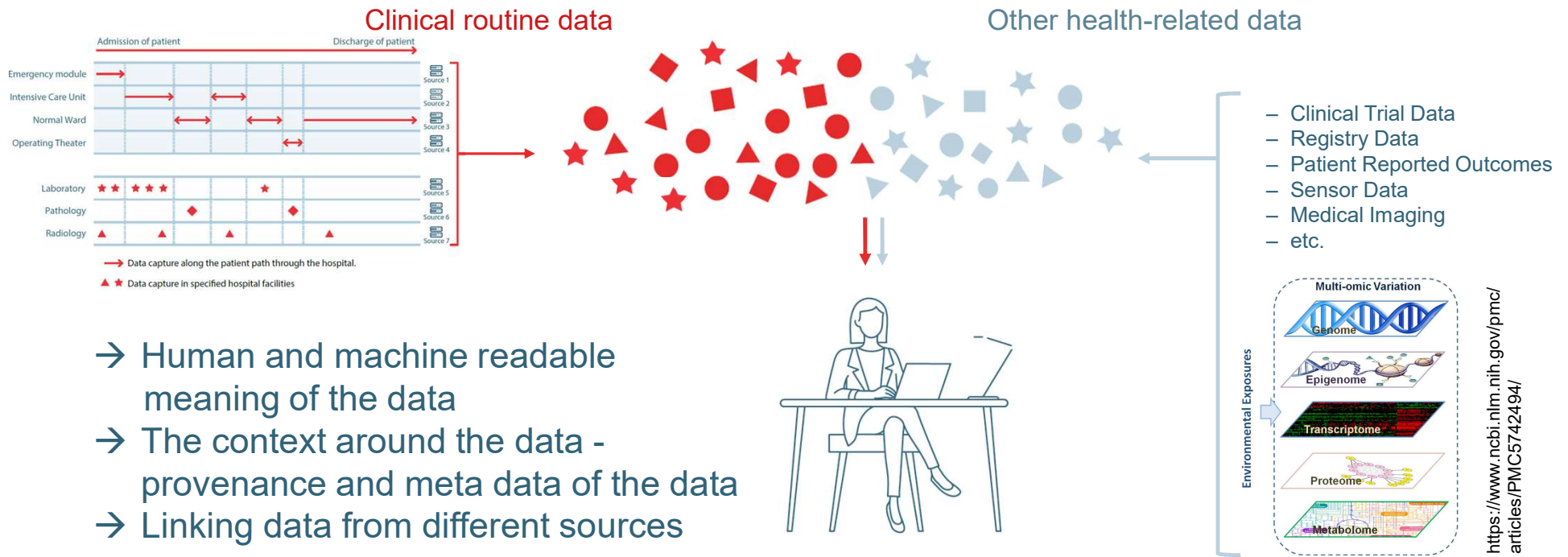
- Responsible use of health-related data for research
- FAIR Health data for research
- Information security and privacy
- BioMedIT: Research with sensitive data



Core infrastructures at Swiss University Hospitals

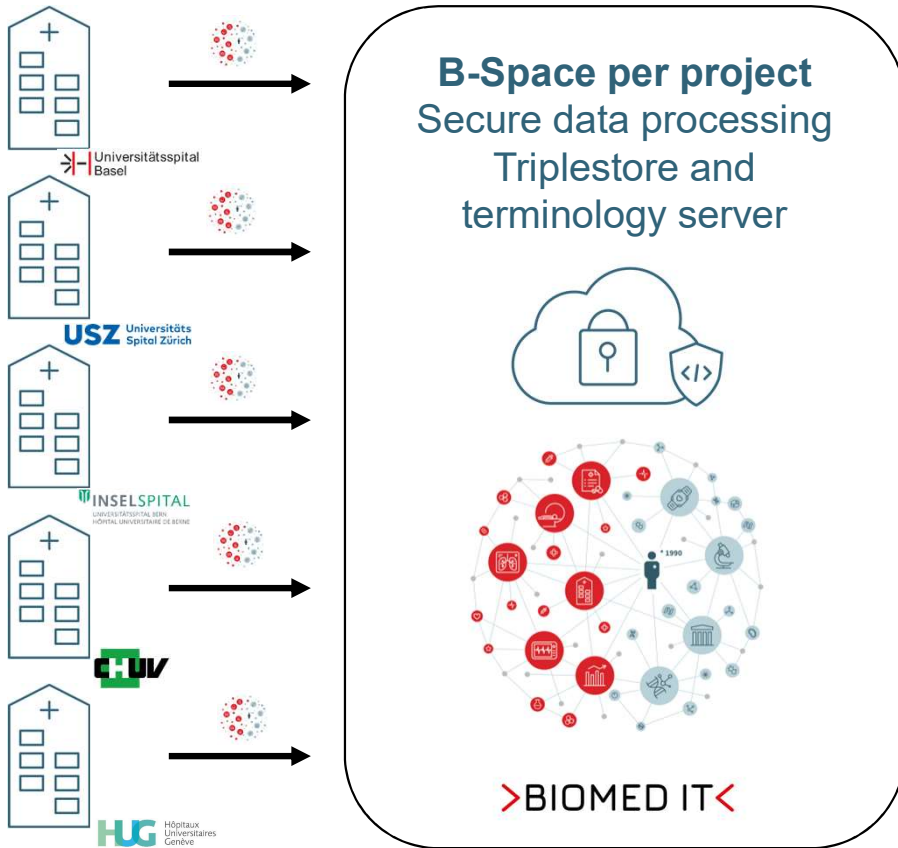


The need for data interoperability [at the source]



- Human and machine readable meaning of the data
- The context around the data - provenance and meta data of the data
- Linking data from different sources

SPHN National Data Streams

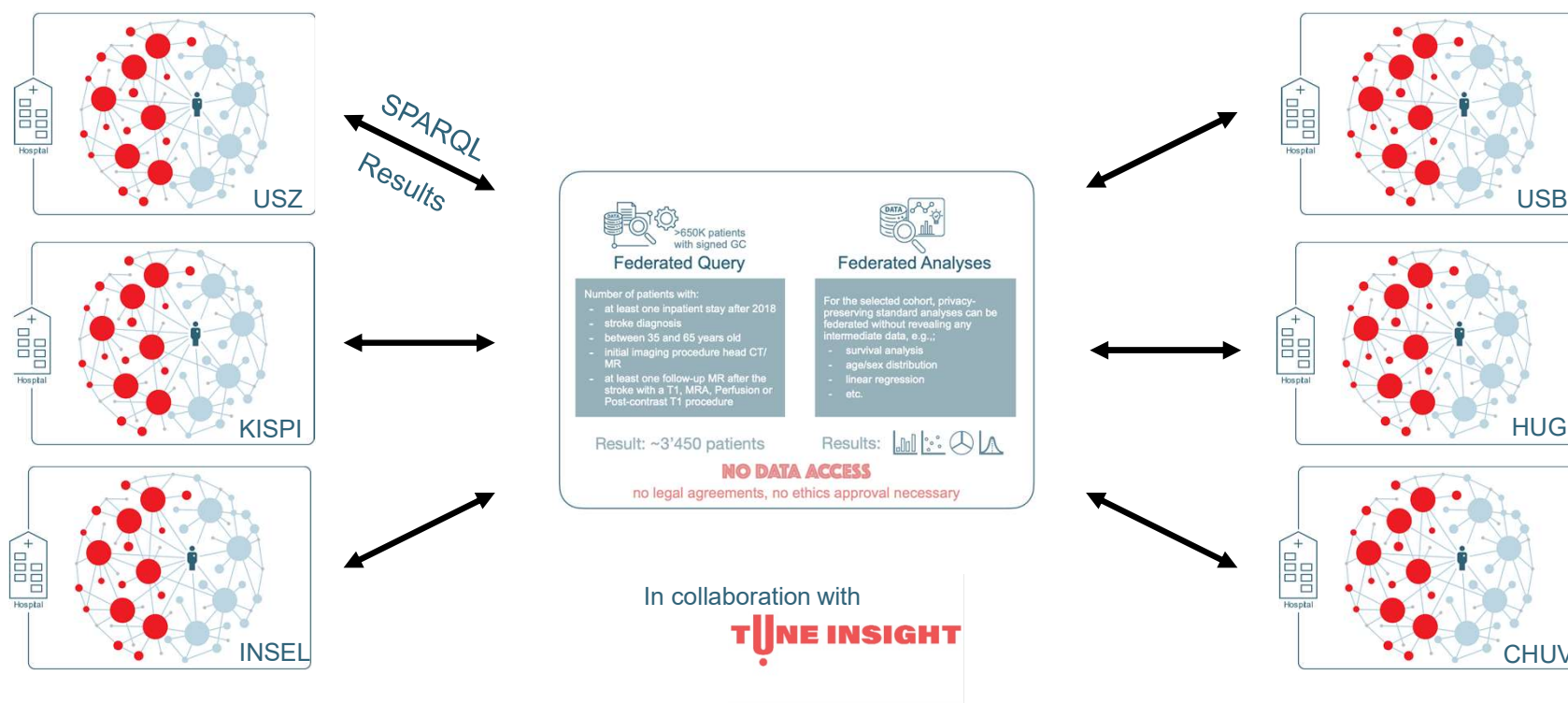


Project-specific infrastructure development, data management and data-driven research

<p>IICU</p> <p>Personalized, data-driven prediction and assessment of infection-related outcomes in Swiss ICUs (IICU)</p> <p>Main PIs: Prof. Dr. Adrian Egli (UZH) & Prof. Dr. Catherine Jutzeler (ETHZ)</p> <p>Duration: 01.09.2022 - 31.08.2025 (36 months) Award: CHF 5 Mio</p> <p>Lay summary More information</p>	<p>SPO-NDS</p> <p>Swiss Personalized Oncology National Data Stream (SPO-NDS)</p> <p>Main PIs: Prof. Dr. Olivier Michelin (CHUV) & Prof. Dr. Bernd Bodenmiller (ETHZ)</p> <p>Duration: 01.09.2022 - 31.08.2025 (36 months) Award: CHF 5 Mio</p> <p>Lay summary More information</p>	<p>SwissPed Health</p> <p>Pediatric personalized research network Switzerland (SwissPedHealth) – a Joint Pediatric National Data Stream</p> <p>Main PIs: Prof. Dr. Luregn Schlapbach (University Children's Hospital Zurich) & Prof. Dr. Julia Vogt (ETHZ)</p> <p>Duration: 01.09.2022 - 31.08.2025 (36 months) Award: CHF 5 Mio</p> <p>Lay summary More information</p>	<p>LUCID</p> <p>LUCID, Low Value of Care in Hospitalized Patients, a National Data Stream on Quality of Care in Swiss university hospitals</p> <p>Main PIs: Dr. Marie Méan (CHUV) & Dr. Guillaume Obozinski (EPFL)</p> <p>Duration: 01.09.2022 - 31.08.2025 (36 months) Award: CHF 5 Mio</p> <p>Lay summary More information</p>
-----------------------------------------------------------------------------------------------------------------------------------------------------------------------------------------------------------------------------------------------------------------------------------------------------------------------------------------	-----------------------------------------------------------------------------------------------------------------------------------------------------------------------------------------------------------------------------------------------------------------------------------------------------	-------------------------------------------------------------------------------------------------------------------------------------------------------------------------------------------------------------------------------------------------------------------------------------------------------------------------------------------------------------------------------------------	---------------------------------------------------------------------------------------------------------------------------------------------------------------------------------------------------------------------------------------------------------------------------------------------------------------------------------------------------

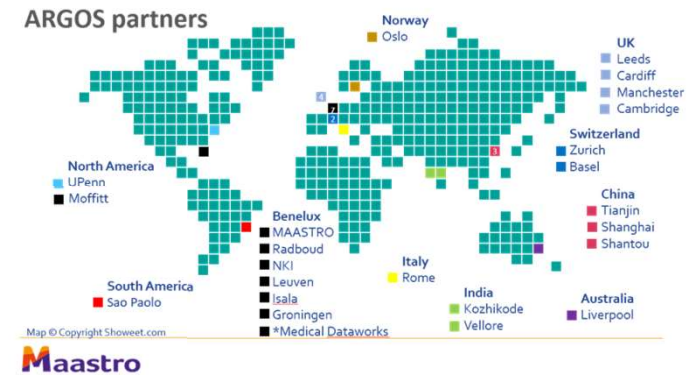
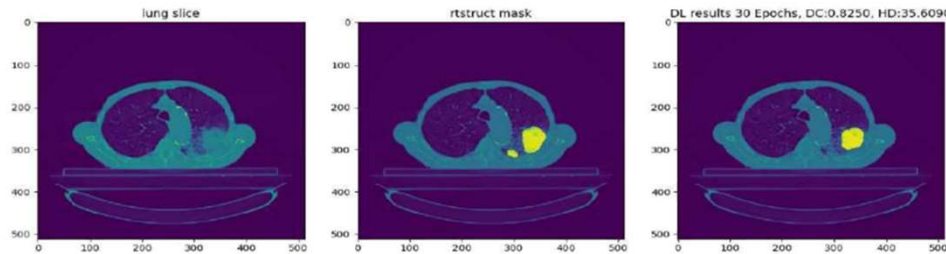
>BIOMED IT< Strategic Focus Area **Personalized Health and Related Technologies**

Data exploration and analysis system (DEAS)



International Federated Compute ARGOS

(AR)tificial intelligence for (G)ross tumour v(0)lume (S)egmentation



- Fully open-sourced code for federated deep learning
- 22 institutional partners across 10 countries
- Executed legal agreements in multiple jurisdictions incl EU, Switzerland, US, China and India
- Inclusivity and diversity – low resource threshold for small clinics and LMICs; each contributes 200+ cases
- In-kind funding from participants

Data alone is not enough

For a functioning data ecosystem and broad use of health data in research and innovation, there is a need for:

- Domain knowledge
- Scalable and sustainable infrastructures
- A smart governance framework
- Close coordination at national and international level
- A change in research culture, to foster collaboration, transparency, and to ensure responsible data practices
- Public acceptability



Acknowledgements

The PHI Group: Katrin Crameri, Owen Appleton, Jan Armida, Patricia Fernandez Pinilla, Sergio Guarino, Simone Guzzi, Petar Horki, Shubham Kapoor, Julia Maurer, Michael Müller-Breckenridge, Vasundra Touré, Deepak Unni, Harald Witte

Accenture: Philipp Krauss

The SPHN NSB and NAB, Task Forces & WGs

The BioMedIT Board and workforces @ ETHZ, Unibas, Unil/SIB

The Hospital workforces @ USZ, USB, CHUV, Insel, HUG

The SPHN Management Office: Thos Geiger, Liselotte Selter, Sarah Vermij, Christine Remund, Michaela Egli, Judith Kiss Blind



<https://bit.ly/3Ja3cW8>



<https://bit.ly/3mU5fTI>



<https://bit.ly/31ng7RW>



<https://bit.ly/34mdNfh>



go.nature.com/3Nq4KOe

<https://bit.ly/43EEvJK>



sabine.oesterle@sib.swiss



www.sphn.ch | www.sib.swiss/phi